



## Motorized Shades

# Unmatched Convenience and Flexibility

SWFcontract's motorized solar shading systems combine functionality and flexibility while maintaining a clean design aesthetic in today's commercial interiors. From simple raise-and-lower controls to state-of-the-art automation systems, SWFcontract's motorized shades can be configured for any facility, using any design, in any industry.

### 5-Year Warranty

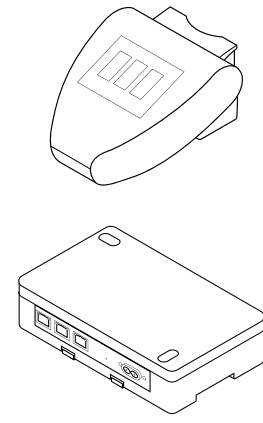
Motorized systems are backed by a five-year warranty ensuring years of reliable, and worry-free operation.

Motorized shades are scalable to any application and can be installed on a single window, an individual office, entire floor, or complete building. Using motorized shades, individuals can easily raise and lower large, heavy, or difficult to access shades with ease.

SWFcontract is part of the commercial division of Springs Window Fashions, an industry leader in window coverings since 1939. SWFcontract has unmatched experience with our window coverings installed in more than one million commercial applications throughout North America.

**SWF**CONTRACT™

# Motorized Control Types

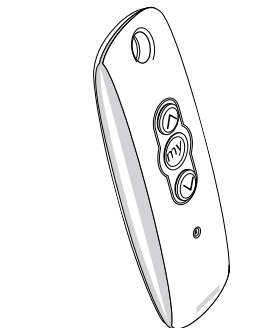


Intelligent motorized shade systems are the peak of solar control efficiency. As the sun changes position throughout the day, and as sky conditions change due to weather, intelligent solar shade systems automatically raise and lower shades to pre-programmed positions. This reduces solar heat gain and glare while preserving outside views for the comfort of building occupants. With SWFcontract's intelligent motorized shade systems, you never need to worry about optimum shade positioning.

## Intelligent

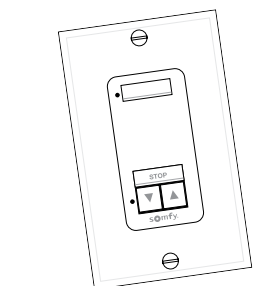
### Maximum Solar Efficiency

Motorized shades can be integrated with third-party building automation controls to work in harmony with lighting, HVAC, and other building management systems.



SWFcontract's wireless motorized shades provide precise shade placement using a wireless control that can be a hand-held remote, mounted on a wall, or attached to a podium without the need or expense of hard-wired controls.

## Wireless



Standard motorized shades provide the convenience of raising and lowering shades with a simple wall mounted switch. Standard motorized shades are hard wired for power and control.

## Standard

# Ideal Applications

## Healthcare

Motorized shades are ideal for those with physical limitations enabling them to raise and lower shades at will. Incorporating a wireless remote system allows complete flexibility to operate shades from anywhere in a room.



## Corporate

Adjust shades quickly, effortlessly, and quietly to allow for optimum daylight control in the workplace. Motorized shades increase employee comfort and performance while maintaining a uniform, consistent, and professional façade appearance.



## Hospitality

Improve guest experience with controlled daylight. Motorized shades enhance the functional and aesthetic designs of hotels, conference centers, health clubs, restaurants, and other venues by controlling solar heat gain and glare while providing a clean, professional, and inviting appearance.



### Future-Proof Your Next Project

Whether your next project is new construction, renovation, or remodeling, SWFcontract's motorized shade systems are easily customizable in anticipation of changing space demands for commercial use.

## Education

From a single switch, shades can be raised or lowered in a classroom to control daylight to create an optimum learning environment.



## Questions?

Speak to our application engineers. Call 800-544-4749 ext. 3 or email [technical.support@swfcontract.com](mailto:technical.support@swfcontract.com).

## Learn More

Call us at 1-800-327-9798 or speak to your Regional Sales Manager. Our expert staff is standing by to help.



# Features

No matter which control is best for your application, SWFcontract's motorized shade systems are scalable for small, large, or custom shade needs. Whether you are motorizing shades in a single office or installing custom shading and lighting controls in partnership with a third-party building management system, SWFcontract has the combination of products and components to make your solar shading project more efficient and cost-effective.



Motor Type	Description	Features
Standard Motor	<ul style="list-style-type: none"> <li>• Hard-wired power and control</li> <li>• Line voltage</li> <li>• Low voltage</li> </ul>	<ul style="list-style-type: none"> <li>• Wired reliability</li> <li>• Ideal for new construction</li> <li>• Simple solution for small projects</li> </ul>
Radio Frequency (RTS)	<ul style="list-style-type: none"> <li>• Wireless control</li> <li>• 24V plug-in transformer or direct-wired power</li> <li>• 120V hard-wired power</li> </ul>	<ul style="list-style-type: none"> <li>• Easy planning (wiring)</li> <li>• Easy electrician interaction</li> <li>• Easy install (plug-ins)</li> <li>• Wide range of controls</li> <li>• Better retrofit option</li> <li>• Price point leader</li> </ul>
Intelligent Motor	<ul style="list-style-type: none"> <li>• Computer-controlled/automated</li> <li>• 24V plug-in transformer or direct-wired power</li> <li>• 120V hard-wired power</li> </ul>	<ul style="list-style-type: none"> <li>• Configurable/flexible</li> <li>• Bi-directional (feedback)</li> <li>• Building automation tie-in</li> <li>• Energy efficient</li> <li>• Solar entrance/depth measure</li> <li>• Sensor control available</li> </ul>



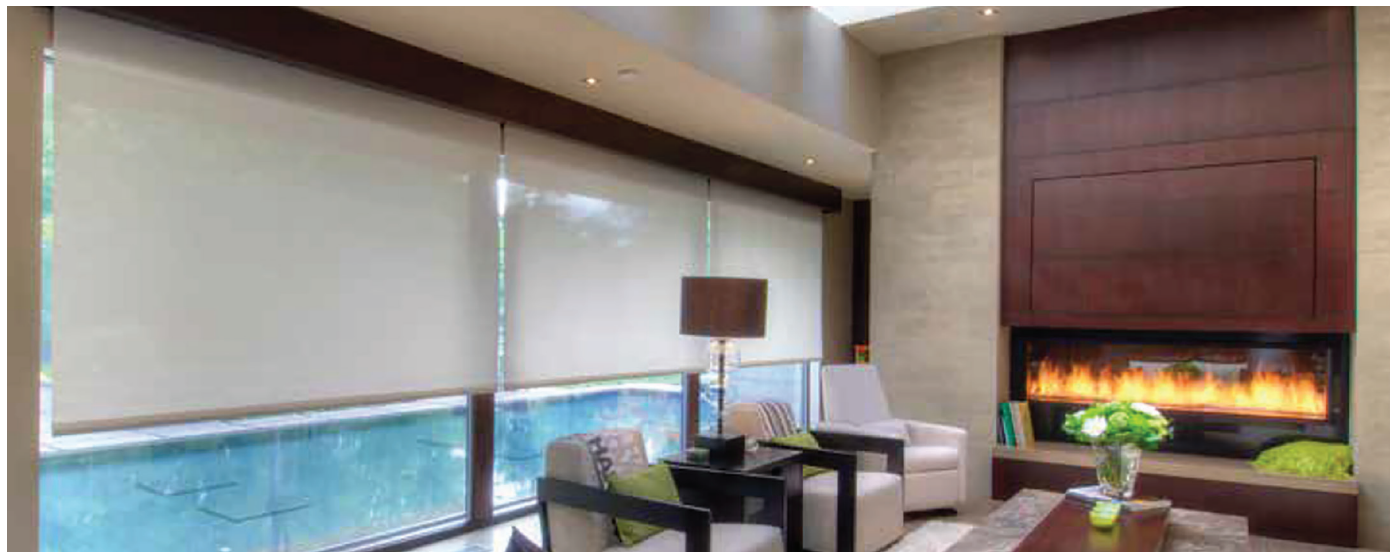
## Your Trusted Partner | With a full line of commercial window coverings

At Springs Window Fashions, our goal is to create the best experience possible for our customers, end users, and associates. It's this commitment that sets us apart from the pack and raises the bar for quality and service in our industry. As part of the commercial division of Springs Window Fashions, SWFcontract embraces this commitment to excellence and strives to create a culture that includes a dedication to the following:

- Service excellence
- Product innovation and process improvement
- Associate involvement via our Quality at the Source program
- Strategic partnerships with key accounts and suppliers
- Supply chain management
- Protection of employees and the environment
- Social and community responsibility

# MOTORIZED FlexShade® RTS AC

3-WIRE MOTOR FEATURING PARALLEL WIRING



Private Residence, London, Ontario, CAN., Dealer: London Audio, London, Ontario, CAN, Photography: Don Pye, Studio Rockwood, Ontario, CAN

- The Motorized FlexShade® RTS AC window shade offers a 3-wire motor that features parallel wiring, electronic programmable limits, and a multitude of control options. With a hand-held remote control and Plug & Play options, this easily programmable shade is the ideal choice for the office, boardroom, small commercial settings, residential, and church applications.

## FEATURES

- Shades can be coupled to reduce the number of motors required.
- Secure moisture resistant connection to line voltage using M12 Connector or Plug & Play option using three-prong NEMA plug.
- Motors can be parallel wired (daisy chained).
- Wireless wall switches available in 1, 2, 3, 4, or 5 channels. Handheld remotes are available in 1, 4, or 16 channels.
- Serial and dry contact interfaces available.
- Recess mount hardware includes pocket headbox or Pocket D headbox with tile lip. Where a pocket already exists a wall clip and closure are available with or without a tile lip.
- Compatible with U, H, and L channels for light-gap reduction.
- Dual roller hardware components include: Dual Roller Endcaps, Dual Roller Fascia, and Dual Roller Pocket Headbox. Options may vary by product type. See technical documents for details.
- Product designed for interior use.
- UL listed. Dual motorized units are UL listed.

## – OPTIONS

- Optional sun sensor or timer with on-screen display.
- Optional App control is available.
- Multiple hardware options for surface mounting, including brackets (standard), fascia with endcaps, or headbox with closure.
- Hardware finish choices: clear anodized (standard), black, white, ivory, or charcoal bronze. Custom powder coat colors available.
- Optional dual rollers available upon request.
- Dual Roller Fascia finish choices: clear anodized (standard), black, white, ivory, or charcoal bronze. Custom powder coat colors available.
- Dual Roller Pocket Headbox finish choices: gray inside/white outside or white inside/gray outside with a white wall clip.

## SIZES

- Available in sizes from 29 ½" to 168" (75 cm to 427 cm) wide, depending on fabric selection.
- Larger sizes available with FlexShade® 2 or Colossal FlexShade®.

## FABRIC OPTIONS

[draperinc.com/windowshades/fabricoptions.aspx](http://draperinc.com/windowshades/fabricoptions.aspx)

## WARRANTY

[draperinc.com/warranty.aspx](http://draperinc.com/warranty.aspx)

## SUPPORTING DOCUMENTS

All instructions, technical drawings and other supporting documents are located at: [draperinc.com/documents.aspx](http://draperinc.com/documents.aspx)

For more information on this product visit: [draperinc.com/windowshades/motorizedshades.aspx](http://draperinc.com/windowshades/motorizedshades.aspx)

